

# PUBLIC AUCTION

# Estate of Thomas Martin Mang

**Due to Tom's passing, the following items will be sold at public auction, located at Paola Livestock Auction, 26701 Eagle Drive, Paola, KS 66071**

~~**SUNDAY MARCH 22, 2020 at 1:00 PM**~~

## TRACTORS & SKID STEER

**2014 CaseIH Maxxum 110, 1,000 hours, 110 hp**

**2012 CaseIH Maxxum 125, 2,010 hours, w/C-IH 755 loader, 125 hp**

**2004 CaseIH JX1100U, 4,900 hours, w/C-IH 265 loader, 100 hp**

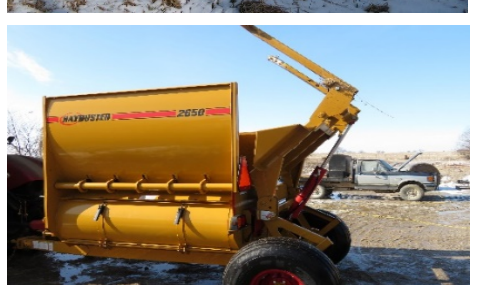
**1997 CaseIH Magnum 8910, with duals, 3,160 hours, 135 hp**

**Loader mounts for C-IH 110**

**1975 IH 2500 utility tractor with loader**

**1955 WD-45 tractor, with plow and mower**

**2005 CaseIH 430 skid steer, 1,050 hours**



## TRUCKS & TRAILERS

**1995 Freightliner day cab semi, 394,450 miles**

**2002 Jet hopper bottom grain trailer**

**1989 Ford F-250, 4x4, 460 cu in motor, new flatbed, 145,450 mi**

**2001 Featherlite 24' aluminum stock trailer**

**1998 Starlite 24' gooseneck flatbed trailer**

**1975 Chevy C-5500, 18' grain bed, 145,000 miles**

**1970 IHC 1600, 16' dump grain bed, 68,950 miles**

## COMBINE & HEADERS

**1989 CaseIH 1660 combine, 3,690 hours, with 20' flex h**  
**Case IH 6 row corn head**

## HAY & FEEDING EQUIPMENT

**2012 New Holland 7090 round baler, loaded**  
**Casell WRX 301 12 wheel rake**  
**2012 Casell DCX13, 13' disc mower**  
**2014 Haybuster 2665 hay processor**  
**Kuhn - Knight 5042 TMX wagon**  
**NH 354 grinder / mixer**  
**New Holland side delivery**

## PLANTING & TIMING

**CaseIH 900 6 r**  
**CaseIH 490**  
**CaseIH 55**  
**CaseIH 4800**  
**Great plains 24'**  
**CaseIH 5500 15' soy**  
**5 bottom semi mount p**  
**4 bottom plow, 3 point**

## ✓ M EQUIPMENT

**g 2615 15' bat wing mower**  
**fixed brush mower**  
**fixed brush mower**  
**Backhoe attachment for skid steer**  
**3 point log splitter**  
**500 gal sprayer w/45' booms**  
**Bradford 250 bushel gravity wagon**  
**Gehl 2 row silage chopper**  
**Misc. bale forks / spears**

**TOP QUALITY  
EQUIPMENT! MORE  
PICTURES ON OUR  
WEBSITE!**

<b>Misc. grain bin auger</b>	<b>Water tanks</b>
<b>NH 513 manure spreader</b>	<b>Feed bunks</b>
<b>Auger feed wagon</b>	<b>Misc. tools</b>
<b>Grain roller mill</b>	
<b>2 each 300 gal fuel tanks</b>	
<b>1 each 500 gal fuel tank w/electric pump</b>	
<b>Westfield 70' grain bin auger w/pullout hopper</b>	
<b>Miller Bobcat welder, 130 hours</b>	
<b>16' Mark Twain boat, 120 HP in/out Mercury</b>	

**AUCTION NOTE:**

**Tom took great pride in the care of his livestock and his equipment - and it shows. Most of his equipment was bought new and most has been shedded. Tom was a great friend and we are honored to offer his equipment for auction. All equipment will be moved to Paola Livestock Auction property prior to sale. Food and restrooms available on site. Registration on site - no online bidding.**



# Paola Livestock Auction

**26701 Eagle Drive | Paola, KS 66071**

**Josh Bourquin: 913-731-4240    Maurie Bourquin: 913-731-4348**

**Office: 913-294-3335      Dan Peters: Auctioneer**

**For more pictures please visit our website at: [paolalivestockauction.com](http://paolalivestockauction.com)**

**Estate Information: Paul Morano, Administrator 970-227-4083**

**TERMS: CASH OR CHECK with proper ID. All items sold in "AS IS". All statements and descriptions herein are believed to be correct to the best of our ability. However, the Owners, Auction Firm, Auctioneers make no warranties, expressed or implied. The Owners and Auction Firm are not responsible for any stolen or misplaced property or accidents. Buyer takes ownership when bidding complete. No property removed until settled for.**